

DISTINGUISHED ALUMNI DINNER PLANNED

The McKinley High School Foundation is pleased to honor a very distinguished alumnus, Ruth Yaeko Masunaga Ono. The dinner will be held on Thursday, October 9, 2003 at the Hilton Hawaiian Village, Coral Ballroom. Dr. Ono's contributions to McKinley and the entire state of Hawaii are many. She has tirelessly given back to many organizations. We are very proud to be able to say that she hailed from McKinley. Many have benefited from her efforts and we would like to invite you to join us as we pay tribute to her and her many life time achievements. For more information on the dinner please see pages 2 and 3.



STEVE HIRANO

PRESIDENT'S MESSAGE

Aloha,

These are exciting times for the McKinley High School Foundation. We are extremely proud that this year we have awarded **35 scholarships** at the 2003 Awards Ceremony on May 21, 2003. Helping McKinley students achieve their goal of academic excellence is what our founding fathers envisioned. It is through your support that we are able to award these scholarships. While occasionally we receive a large contribution, the majority of our contributions are \$25 and \$50 – we are grateful to all of you who have contributed.

This year two alumni have established Scholarship Programs; Carole Kai Onouye and Patsy Young have generously established a Foundation Scholarship Fund. We are very grateful to them for their gifts.

The class of 2003 recently left the hallowed halls of McKinley – they like us, will come to cherish their days at McKinley and always hold a special place in their hearts for their alma mater. Please take a moment to look at the donor list for you will see that more than 70 graduates from the class of 2003 have contributed to the Foundation. We are truly proud of them. Thank you class of 2003! We wish you all the very best.


In this newsletter you will find an article on Mr. Abraham Goo, a McKinley alumnus and former president of Boeing Advanced Systems. He and his wife Shin (Quon) Goo have pledged \$20,000 to the Foundation in a "Matching Gift Program". Mr. and Mrs. Goo will match every "new donation" up to \$20,000. While the Board of Directors has been actively seeking out new donors, every contribution makes a difference. I would like to personally thank all of you for your efforts.

Sadly, since our last newsletter, one of our most distinguished supporters and past honoree at our 2000 Tribute Dinner, Gladys Brandt has passed away. She will be greatly missed.

As mentioned in our last newsletter we are busy preparing for our Distinguished Alumni Dinner, which will be held on Thursday October 9, 2003 at the Hilton Hawaiian Village, Coral Ballroom. We are deeply humbled to be honoring one of our most distinguished alumni, Dr. Ruth M. Ono. Her contributions to McKinley and our entire state are many, we are pleased to honor her and her lifetime achievements. We sincerely hope that many of you will attend.

As always, we welcome your comments, input, and donations. Please use the remittance envelope that is attached to this newsletter. If you have any questions, please call the Foundation at (808) 536-3832.

Thank you for your continued support.


Steve Hirano
President

RUTH YAEKO MASUNAGA ONO



For a lady whose favorite meal is Spam, eggs and rice, Ruth Ono, with her husband, Alfred, has enjoyed haute cuisine with some of the world's notables – England's Margaret Thatcher, Israel's Yitzak Shamir and Simon Peres, Prince Albert of Belgium, Denmark's Princess Benedicte, Japan's former Crown Prince Akihito and Crown Princess Michiko and Prince Hitachi and Princess Hanako, and a long list of others.

It's been that kind of life: dynamic, multidimensional and rewarding. Ruth was born in Lahaina where she attended Kamehameha III School, went on to Washington Intermediate when her family moved to Honolulu, graduated as valedictorian from McKinley High School, attended the University of Hawaii at Manoa, and then received her master's degree in public health administration from the University of California at Los Angeles. (Years later, she was awarded an honorary doctorate in medicine from Japan's Toho University, a rare honor.)

In 1963, she began a long association with the Queen's Medical Center, serving in a number of high-level capacities while at the same time being a homemaker and taking on role after role in the community. The list of boards she has served on or chaired is staggering. To name a few: University of Hawaii Board of Regents, Aloha United Way (the only woman ever to chair this board), Hospital Association of Hawaii, Data Processing Management Association, Vocational Rehabilitation of Hawaii, City Salary Commission, Japanese Chamber of Commerce, Girl Scouts Council of

Hawaii, Chaminade University board of regents, Center for Asian Pacific Exchange, American Diabetes Association, St. Andrew's Priory and American Hospital Association.

A fund-raiser of awesome energy, Ruth is credited with generating \$250,000 for the Japanese Cultural Center of Hawaii (which understandably gave her a lifetime Achievement Award). She raised funds for the Children's Discovery Center, University of Hawaii Foundation, Soroptimist International of Honolulu, American Red Cross, Japan-American Society and more.

She and her husband have traveled widely, including more than 80 trips to Japan, where she engaged in volunteer work for hospitals, helped to build hospitals and planned curricula for medical schools. For Toho University, she produced demographic studies and served as a preceptor for more than 40 medical students planning to study at Queen's in collaboration with the University of Hawaii School's of Medicine.

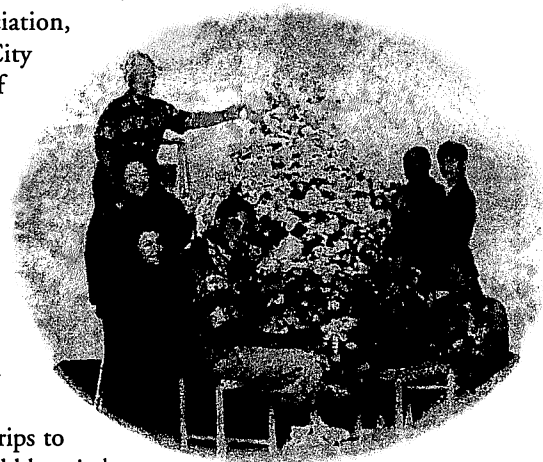
In all of these travels, Ruth and her husband "collected" children to brought into their home in Hawaii for stays ranging from a week to four years. They numbered in the hundreds, and came from Nigeria, Germany, Japan, Israel, The Philippines, China, Korea and Taiwan. Another close tie with Japan is Dr. Torao Tokuda, who ended his career as a surgeon in 1979 and with Ruth's help began building hospitals all over Japan from the ensuing 22 years.

The awards have come naturally. Ruth has been the Sales and Marketing Executives' Salesperson of the Year. She was in the top ten of the national American Businesswomen's Association, a Woman of Distinction as designated by the Girl Scouts Council of Hawaii, three times the Outstanding Member of the Data Processing Management Association and an Outstanding International Woman as judged by Soroptimist International of the Americas. Among other honors is the National Association of Hawaiian Civic Clubs' selection of her as the Most Outstanding Non-Hawaiian Hawaiian.

Ruth's childhood shaped her for service. While the women in her family were concerned with feminine traits, the men in her family stressed leadership, discipline, humility, integrity and education. As a schoolgirl in Lahaina, it was her paternal grandfather who taught her, after school hours, to speak Japanese. Later, with a lack of women to mentor her, she learned leadership from men such as Johnny Bellinger, chairman of the board of First Hawaiian Bank, and at Queen's, board chairmen – E.E. Black and especially Malcolm MacNaughton.

Her achievements began in a time when there were few women in high executive positions, when her minority race and minority gender tended

to give her greater challenges. The achievements continue, her days filled with meetings and conferences, her evenings filled with charitable events. "But" Ruth says, "no day goes by without worshipping before the family *obutsudan* (altar) to give thanks for friends and relatives who've made this a wonderful world." - Reprinted with permission from *"Living Legacy"* by Scott C. Stone.



The McKinley High School Foundation invites you to attend The Distinguished Alumnus dinner honoring

Ruth Yaeko Masunaga Ono

On Thursday, October 9, 2003 at the Hilton Hawaiian Village, Coral Ballroom

Auction and No Host Cocktails: 5:30 p.m.

Dinner: 6:30 p.m.

Close 9:00 p.m.

Dress: Aloha Attire

McKinley High School Foundation Tribute Dinner Committee

Honorary Chair

Walter A. Dods, Jr.

Chairman of the Board and Chief Executive Officer, First Hawaiian Bank and BancWest Corporation

Honorary Vice Chairs

Amy Agbayani
Peter Carlisle
Dr. Doris Ching
John Cushnie
Gary Dung
Senator Hiram L. Fong
Aaron Fujioka
Guy Hagi
Mufi Hanneman
Shari Higa
Mazie Hirono

Rick Humphries
Dr. Satoru Izutsu
Allen Kajioka
Duane Kawamoto
Ann Kobayashi
Fred Kobashikawa
Amy Kurihara
Matt Matsunaga
Albert Miyasato
Tomoko Izumi Mohideen
Dr. Blair Odo

Iris Okawa
Carole Kai Onouye
Leighton Oshima
Elizabeth Saiki
Joichi Saito
Seikichi (Chick) Takara
Fred Tanaka
Noel Trainor
Dr. Lawrence Tseu
Allan Yasue
Patsy Young

Tribute Dinner Committee/Board Members

Tribute Dinner Chairperson Jackson Nakasone

Shirley Akiyoshi
Suzanne Chun Oakland
Lee Donohue
Ranold Fujioka
Darryl Fujiuji
Jean Hagi
Milton Hirata
Steve Hirano
Susan Ichimasa

Eugene Imai
Robert Imai
Susan Isa
Dan Ishii
Allen Kajioka
Eugene Kaneshiro
Duane Kawamoto
Keith Kurahashi
Wendell Lee

Brian Maeshiro
Dorothy Matsuo
Gary Mijo
Lester Nakaichi
Ben Nakaoka
Bruce Nakaoka
Jackson Nakasone
Charles Nishioka
Alan Okimoto

Philip Russell
Stan Seki
Susan Sumida
Dexter Suzuki
Neal Takamori
Carl Takamura
Larry Takumi
Allan Yasue
Elijah Yip

McKinley High School Foundation Tribute Dinner

Honoring Ruth Yaeko Masunaga Ono

Thursday, October 9, 2003 – Hilton Hawaiian Village, Coral Ballroom

Name _____

Address _____

City/Zip _____

Daytime Telephone _____ Evening Telephone _____

Yes, I will attend the dinner. Enclosed is a check for \$_____

_____ Golden Tiger Table, \$5,000 (Table of 10)

_____ Black & Gold Table, \$3,000 (Table of 10)

_____ Tiger Table, \$1,500 (Table of 10)

_____ Individual Tickets, \$150

We are unable to attend. Please accept our donation of \$_____

RSVP on or before Tuesday, September 2, 2003

Please make checks payable to McKinley Foundation Tribute Dinner. Mail to: 1039 South King Street, Honolulu, Hawaii 96814 Phone (808) 536-3832

3

TRIBUTE DINNER

ABRAHAM AND SHIN (QUON) GOO, DISTINGUISHED ALUMNUS ESTABLISHES MATCHING GIFT PROGRAM



Abraham Goo, McKinley class of '43 and Shin Quon Goo class of '45 have generously established a matching gift program. After graduating from McKinley, Abraham attended the University of Illinois and earned his degree as an electrical engineer. He went to work at Boeing, where he remained with the company for 38 years. His success at Boeing is a credit to his outstanding work ethic and his belief that if you are challenged and encouraged you can succeed mightily. He retired from Boeing as President, Boeing Advanced Systems. Prior to that he was President, Boeing Military Airplane Co. In November of 2002, Abraham Goo, was inducted into the McKinley High Hall of Honor.

A firm believer in teamwork, Abraham has issued the board of directors a challenge. He will match every first time donation up to \$20,000. So armed with the Goos' encouragement to succeed the board has been working very hard to meet the goal of \$20,000. We hope that you will join us in urging fellow classmates, family and friends to become donors to the Foundation. If you receive a call from a board member or classmate – please take the challenge and send in your contribution.

Helping our young people achieve their goal of higher education is immensely satisfying. We are extremely grateful to Abraham and Shin Goo and all of the many alumni and friends who contribute to the Foundation.



A FOND ALOHA TO GLADYS BRANDT

Gladys Kamakakuokalani Aiona Brandt passed away January 15, 2003 at the age of 96. Gladys was a member of the McKinley High School graduating class of 1925. Throughout her life, she was a champion for education and supporter of the Foundation. Most recently, she was an honoree at our Tribute Dinner held November 1, 2001, along with Dr. Richard Kosaki and Dr. Fujio Matsuda. Her guidance and compassion for McKinley High School will be truly missed.

SCHOLARSHIP PROGRAMS ESTABLISHED



Carole Kai Onouye

Carole Kai, class of 1962, has established a scholarship to be awarded through the Foundation. This year, scholarships were awarded to five deserving graduating seniors at the Awards Ceremony on May 21, 2003.

Patsy Young

Patsy Young, class of 1947 and past executive director of the Foundation, has established the Patsy Young Scholarship Fund. The awarding of the Patsy Young Scholarship will begin in the year 2004.



We are extremely grateful to both Carole and Patsy for their commitment to education by establishing these scholarships.



Elijah Yip

Do our scholarship recipients give back? Every once in a while the Foundation is asked if scholarship recipients sincerely appreciate the financial assistance given to them. If you were to ask our scholarship chairman, Larry Takumi, he would answer, without a doubt, a resounding yes. Under Larry's leadership the Scholarship Program has grown to be one of the most highly sought and respected scholarship funds offered.

Back in 1992, Elijah Yip received one of the first scholarships ever offered by the Foundation. Upon graduation, Elijah attended the University of Hawaii at Manoa as a Board of Regents Scholar (today the Foundation, in its efforts to help as many students as possible does not award scholarships to students who receive a full scholarship such as the Board of Regents program at the University of Hawaii). While attending UH Elijah returned to McKinley to serve as Co-Director of the Speech & Debate Program with English Teacher John Newkirk. Graduating from UH in 1996, Elijah went on to attend the William S. Richardson School of Law where he graduated as salutatorian of his class. After working one year as a law clerk for Chief Judge Emeritus Samuel P. King at the United States District Court for the District of Hawaii, Elijah joined one of the largest and oldest law firms in the State – Cades Schutte Fleming and Wright as an associate in the litigation department.

Elijah continues to give back to the community in many ways and recently became a member of the McKinley H.S. Foundation Board of Directors. We are proud of Elijah and his many accomplishments and we hold the profound belief that any of our McKinley graduates can succeed with the right direction and support. Which is why the board is continuously striving to make the Scholarship Program the strongest financial program possible.

MCKINLEY HIGH SCHOOL FOUNDATION

NOVEMBER 21, 2002 - JUNE 10, 2003

5

DONOR LIST

Class of '25

Toma Tasaki

Class of '30

Helen (Tsuiji) Ikeoka
George Zane in memory of
Nancy Ng Ching (Class of '31)

Class of '31

G. Donald Gedge

Class of '33

Ellen Chang in memory of Kwan
You Chang (Class of '33)

Class of '35

Anthony Ah Choy in memory of
Vera (Sue) Ah Choy
(Class of '35)
Tin Yau Goo
William T. Hiraoka
Edna Ito in memory of Fred T.
Ito (Class of '32)
Elsie (Chee) Kong in memory of
Clifford K.F. Kong
Richard Leon
Jiro Ogawa

Class of '36

Alice (Lum) Lee

Class of '37

Jon J. Chinen
Annie (Ching) Kau
Jennie (Wong) Lum-King in
honor of Mrs. Dorothy
Harding-Jones McKinley
Core-Studies teacher
Kimiye Masumoto
In memory of Irving T.
Masumoto
Robert Pfeiffer
Thelma T. Poland

Class of '38

Andrew In and Jennie (Lee) In in
memory of Mr. Timmy Hirata
Clara (Kawata) Nakano

Class of '39

Winifred (Watanabe) Chinen
John Gonsalves Jr.
Richard Kanno
Walter Kawaguchi
Tsunekazu Nakano
Glenn Nakasone
Kaneo Okase
Richard Tan
Walter Wakinekona

Class of '40

Archie Loo
Richard T. Okinaka

Emmie Shigezawa

Ethel (Lee) Tan

Class of '41

Esther (Harimoto) Ishikawa
Harry H. Kuwaye
Frank Takao

Class of '42

Isamu Furuya
Mew Heong (Chee) Goo
Kazue Granich
Tatsuo Kawamura
Arthur Kubota
Ruth Lee

Class of '43

Shinji (Sumiko) Futa
Sue (Fuji) Inouye
Karen Nakaichi
Thomas T. Nakao in memory of
Mr. Dai Ho Chun
June (Harimoto) Takasaki
Seiko Tokuda
Harold K. Yamanaka

Class of '44

Harriet (Mun) Gee in memory
and honor of Bill Gee
(Class of '31)
Henry Miura
Margaret (Tanoura) Miyama
Fumio Nagaishi in memory of
Charles Nagaishi (Class of '46)
and James Nagaishi
(Class of '42)
Irene (Okazaki) Nakamura
Mae (Toyama) Sakamoto
Mary Lee Sur

Class of '45

Charles Akama
Kikue Furusho
Wilbur Ideta
Larry Miyashiro
Charles Murakami
Harold Noborikawa in memory
of Margaret F. Kam
Yoshiro Saiki in memory of Mas
Saiki (Class of '45)
Yoshie (Tamura) Sugawara
Henry Shimabukuro
Wibert M. Toda
Bert S. Tokairin
William Toyofuku
Kimoyo (Teshima) Yamanaka

Class of '46

Mary S. (Morita) Abe in
memory of Margaret (Fujioka)
Kam
Tsuneko Apaka in memory of
Margaret (Fujioka) Kam class
of '46

Betty T. Burns

Gladys (Tagawa) Fukuda in
memory of Raymond
Miyamoto (Class of '47)
Helen (Shimizu) Imai in memory
of Margaret (Fujioka) Kam
Harold K. Inouye
Walter S. Ishigami
Bettie Kahn in memory of
Margaret (Fujioka) Kam
David M. Kanetoku
Richard and Betty (Sako)
Kikuyama
Edmund Leong in memory of
Margaret (Fujioka) Kam
Rose (Kaneyoshi) Muramoto in
Memory of Richard Y.
Kaneyoshi class of '49
Alice (Masada) Muraoka in
memory of Margaret (Fujioka)
Kam

Florence Y. Murata
Ellen Nagao
Violet (Lau) Pang
Henry C. C. Park
Tom Sato in memory of
Margaret (Fujioka) Kam
Ramona (Akiona) Teves in
memory of Margaret Kam
Ernest T. Uyetake in memory of
Margaret Kam, Lily Teshima
Mishina (Class of '46), Gladys
Tsuiji Nakahara (Class of '46),
Clarenece Omai (Class of '46)
Winifred Yokomoto

Class of '47

Laura (Narahara) Akama
Dorothy (Chang) Chock
Albert Fukuda in memory of
Raymond Miyamoto (Class
of '47)
Beatrice U. (Mukai) Kuwana
in memory of Raymond T.
Mukai
Eugene S. Machida in memory
of Fumiaki "Dumbo" Kishii
(Class of '47)
Richard Mato
Henry Nakamatsu in honor of
Yoshiro Nakamatsu
(Class of '44)
Patsy (Miyahira) Young
Robert I. Yugawa

Class of '48

Nancy Mana Hamabata
Shirley (Okimoto) Ikeda in
memory of my father Albert
Okimoto (Class of '24)
Richard Iwamoto
Ellen (Chun) Kong
Janet K. Matsuno
Hiroshi Nishida

Alice (Naito) Sakai in memory
of May Kimura Suzuki
Jean (Sawa) Sakata
Elsie Jinbo Suyenaga in memory
of Mildred Kong
(Class of '48)
Walter Sur
Ellen Watanabe in memory of
Nancy (Nagagama) and Carl
Sumida (Class of '51) and
Frank S. Watanabe (Class of
'48)
Robert Y. Yonesaki
Thomas T. Yoshioka

Class of '49

Ronald N. Amioka
David Hirai in memory of
Shinichi Nakata
Elsie (Yamada) Hirai
Mildred (Kaneshiro) Hoshino
Beverley (Yamada) Inouye
George Koide
Gerald Liu
Ro Ma in honor of Frank
Hluboky and in memory
of Ryoichi Furtani
(Class of '49)
Margaret F. Ojima
Chun Lum Say in memory of
Eleanor Der Say
Andrew & Nancy Uramoto

Class of '50

Katherine M. (Takeuchi) Cline
in memory of Butler Arii
(Class of '50)
Alex Furubayashi
Donald Harada in memory of
Shirley Shishido (Class of '50)
Mildred Miyasato in memory of
Marge Kam
Mary (Risner) Thronas in honor
of Samuel K. Thronas

Class of '51

Helen (Lee) Char
Donald Garcia
Amy (Inafuku) Ishikawa in
memory of Nancy & Carl
Sumida
Allen Kajioka
Dorothy (Sakashita) Kawasaki
Rose (Yuen) Liu
Richard T. Nakamura
Ray Okimoto
Kyoko (Motoyoshi) Turnbough
Sam Uchihara
Verna (Morimatsu) Wasano in
memory of Edwin K. Wasano

Class of '52

Richard Asato
Pauline Y. Masaki

Dorothy Tamura in memory of
Iwao Itoh (Class of '23)
Dorothy Mori Yamagishi in
memory of Hazel Takata (Class
of '52) and Frances Nishikawa
Hiraoka (Class of '52)
Ellen (Seki) Yoshioka

Class of '53

Thomas Hayashi in memory of
Edwin Wasano (Class of '53)
Albert Morinaka

Class of '54

Edward Z. Asato
Barbara B.Y. Chang
John (Jun-Hap) Chun
Beverly (Nobori) Fujita
Roy A. V. Holck
Robert Iwai
Bert Maekawa
Lester Nakaichi
Betty (Seki) and Henry Nakata
Benjamin Shimokawa and Nancy
(Higa) Shimokawa in
memory of Patsy Wauke
(Class of '53)
Richard Shirai
Howard Takara

Class of '55

Lawrence Himeda
Donald Kaneshiro
Kenneth T. Makiya
Tom Mato
Roy Sakai
George T. Yamao

Class of '56

Joseph W. Fasone
Karen (Ogata) Miller in memory
of Kevin O'Shea
Nancy Weisner
Stanley A. Yamanaka

Class of '57

Joyce (Fuji) and Victor Endo
Walter K. Kagawa
Lola Luke
Clara (Endo) Mato
Betty (Kochi) Nakahira
Cal Namihira
Stanley T. Seki
Ted Shiroma in memory of my
mom Suye N. Shiroma
Stanley Solomon
Elwyn Suzuki
Sally (Kamiya) Tsuda

Class of '58

Larry Chung
Laverne (Lee) Gabriel in
memory of Wendell Gabriel
(Class of '57)
Thomas T. Eguchi
Charles T. Honda
Barbara K. Kanehiro
Pauline t. Kanehiro
Robert K. Masuda
Gary T. Sakagawa

Richard Yamada
Elaine (Nakanishi) Yamanaka

Class of '59

Dolores (Lum) and
Robert K.S. Au
June (Ogawa) Kaya in memory
of Faith Morinaka Sumida
Charlotte Morikuni

Class of '60

Bert Arakawa
Sharon (Ogawa) Inamine in
memory of Colin Ogawa
(Class of '66)
Frank M. Kawamura
Jennie (Tokunaga) Kawamura
Milton F. Kusunoki
Alfred Maneki
Francis R. Smythe
Louis T. Stibbard in memory of
Reynolds "Speedy" Kama
Richard Terakawa
Allan Yasue

Class of '61

Jane Lee
Maelani (Morioka) Sanjek in
memory of Glenn T. Izutsu
(Class of '61)
Carole Jean (Hirota) Tamura
Norman Tan in memory of
Franklin Okamoto
(Class of '61)

Class of '62

Karen (Yasui) Chang
James Hamlin
Chris Hirayama
Carole (Yee) and Roy Hiyama in
memory of Ed Okimoto
James K. Iwamura
Eugene Kawaguchi
Georgine (Arakaki) Kimura in
loving memory of Richard Y.
Arakaki the father, grandfather,
great grandfather of Georgine
Y. Kimura (1962), Debbie
Kimura Alexander (1984),
Lance Y. Arakaki (1987),
Dawn N. Arakaki (1989),
Robyn Arakaki (1991), and
Tania M.E. Kimura (2002)
William S. Leong
Philip Muramoto
Vernon Pai
Dennis Pang
Carl Takamura
Adele (Arashiro) Tsukamoto

Class of '63

Gerald K.N. Aloiau in memory
of Violet Y.L. Aloiau
Paul Arata
Ed Azama
Ernest Chikamori in honor of
Mr. Abraham Goo
Richard Chiogioji
Charlene Gaspar
Russell Higa

Susan (Awa) Ichimasa
Cassandra "Cassy" (Isa) Ikeda in
memory of Steven S. Takara
(Class of '59)

Walter Imai
June (Ono) Ito
Jeanette M.Y. (Lau) Kawamura
Calvin Miyamoto
Carol Okutani in memory of
Dorothy Okutani
Phil Russell
Wayne Sakai
Alberta (Zane) Sato
Lawrence Sato
Clyde Sumida
Susan Sumida
Robert Nakatani
Terry Tamura
Cedric T. Tanioka
David Watanabe
Mario C. Yano
Nathleen (Tan) and James
Young in memory of Rhoda
(Uehara) Say (Class of '63)

Class of '64

Patricia (Noland) Chung
Steve Hirano
Kathleen (Kotsubo) Lyons
David Mau
Ronald Siu
Brian C. Walthall in memory of
my dad, Bernard Walthall

Class of '65

Richard Anzai
Jo Ann (Nakashima) Arakaki
Jean (Lum-Sue) Azama
Dianne (Kitagawa) Douglas
Diane (Yugawa) Miyamoto
Harry Nakayama
Jolene (Okamura) Nakamatsu
Harvey Sato in memory of
Morris H. Sakoda
(Class of '65)
Stanley Sugai

Class of '66

Daryl W.K. and Joyce
(Kajiwara) Chew
Judith (Goo) Lee and Robert Lee
in memory of Carolyn (Goo)
Lee (Class of '63)
Phyllis (Kam) Matsuda
Etta (Yee) and Keith Murakami
in memory of Saburo
Murakami and Stephen Uehara
Valerie (Yanagi) Okihara
Rosie (Hatakeyama) Pai
Gerald Takano
James Takumi
Nelson Tan in memory of
Franklin Okamoto
(Class of '61)
Thompson Tom
Dale (Graham) Yoshimura

Class of '67

Gail M. Lum
Bryant C. M. Ng

Doreen Stenson
Alfred Teruya
Mary J. Ueki

Class of '68

Newton Tan in memory of
Franklin Okamoto
(Class of '61)

Class of '69

Gary Azama
Ray Kanemori
Suzanne Kashiwaeda
Wayne Shiohira

Class of '70

Walter Yuen

Class of '71

Susan Hashimoto
Wendy Ikezawa in memory of
Andrew T. Ikezawa
Cora Yamamoto

Class of '73

Dean Kaneshiro in memory of
Coach Harry Mamizuka
Daniel B. Segovia, Jr.
in memory of Daniel B.
Segovia, Sr. & Helen R.
Segovia
Ralph M. Yoshioka

Class of '74

Norman Nagamine
Benjamin and Debra (Chow)
Nakaoka
Gerald Seki in honor of the Class
of 1974

Class of '75

Tertia (Chris) Freas
Aaron Fujioka
Greig Gaspar
Rona (Gushiken) Lum
Brian M. Maeshiro
Bruce Nakaoka
Diane Yamauchi

Class of '77

Patrick Ganeku
Colleen (Higa) Tanioka

Class of '79

Gary Nishikawa

Class of '80

Doris (Hokama) Ganeku
In memory of Troy Imoto

Class of '81

John B.K.K. Yuen

Class of '84

Alan Chun

Class of '86

Jenny C.Y. Cheng

THE MCKINLEY HIGH SCHOOL FOUNDATION AWARDS 35 SCHOLARSHIPS!

We are so very pleased to inform you that this year the Foundation awarded 35 scholarships to very deserving graduating seniors. Under the guidance of chairs Larry Takumi and Allen Kajioka, the Scholarship Committee had the daunting task of selecting this year's recipients. The Committee members spend many hours reviewing applications – which number over 100. At the Awards Ceremony at the McKinley High School Auditorium on May 21, 2003 the Scholarship Committee in attendance, Larry Takumi, Allen Kajioka, Eugene Imai, Ranold Fujioka and Brian Maeshiro, were truly impressed by the grandeur that the students conducted themselves. The ceremony is always very dignified and all of the students receiving awards display an amazing amount of maturity – instilling Tiger Pride!!

The scholarships awarded:

- 1 \$6,000 Alexander & Baldwin R.J. Pfeiffer Community Scholarship; **Donna Lau**
- 3 \$6,000 Four Year McKinley High School Foundation Scholarships; **Joe Kwan, Chase Lee, Oscar Loui**
- 1 \$1,250 Jack Tsui Scholarship; **Andrew Lum**
- 1 \$2,500 Daniel K. Inouye Scholarship; **Shao Yu Lin**
- 2 \$2,500 Hung Wo & Elizabeth Lau Ching Foundation Scholarships; **Katrice Kubota-Teruya, Karen Lei**
- 2 \$1,250 McKinley High School Foundation Scholarships; **Rayna Isaki, Tina Tin**
- 5 \$1,000 McKinley High School Foundation Scholarships; **Jennie Lee, Thuy-Anh Nguyen, Anna Li, Ayaka Mitsunari, Dana-Lyn Hyun**
- 5 \$1,000 Hung Wo & Elizabeth Lau Ching Foundation Scholarships; **Stacey Cheng, Wilson Cheng, Bonny Kwan, Amy Lee, Anne Lam**
- 2 \$1,000 Daniel K. Inouye Scholarships; **Clariss Velasco, Michael Li**
- 5 \$1,000 Carole Kai Onouye Scholarships; **Zachary Morita, Jason Tang, Michael Owens, Christopher Kobayashi, Dawn Yara**
- 2 \$2,000 Two Year McKinley High School Foundation Scholarships; **Chui Ling Wu, Yuen Ting Chiu**
- 6 \$750 McKinley High School Foundation Scholarships; **Kaulike Kalama, Phuonguyen Do, Amber Tateno, David Pae, Juan Situ, Tran Thanh Hong**

Congratulations to these outstanding students. We wish the entire class of 2003 the very best – we know that they will go on to do great things.

PLANNED GIVING

As life's circumstances change, so do insurance policies related to your financial planning. You can have the satisfaction of helping McKinley High School, its teachers and students in the future by gifting an insurance policy that's no longer needed.

Life insurance can be an effective funding vehicle for charitable gifts. If a donor transfers a life insurance policy to the McKinley High School Foundation, the gift is tax-deductible for gift tax purposes. If the donor pays subsequent premiums due on the policy, those additional premium payments constitute additional gifts that would also qualify for the gift tax charitable deduction.

For more information, please contact Philip Russell ('63) First Vice President of the McKinley High School Foundation at (808) 524-5151 ext. 124.

I would like information about making a will bequest to the McKinley High School Foundation.

Name (Please Print): _____

Address: _____

Phone: _____ (home) _____ (work)
 _____ (cell) _____ (fax)

Email: _____

Mail to: McKinley High School Foundation
 1039 South King Street • Honolulu, Hawaii 96814

Class of '01

Terri Okihara

Class of '02

Christopher Ganeku

In memory of my God Father

Troy Imoto

Class of '03

Heb Ababa

In honor of class of '03

Boyz in da Back

Joel Cabucana

Kimberly Cardenas

Wilson Cheng

Stacey Cheng

Yuen Chiu

Michael Chun

Vanessa Cubangbang

Ikaika DeCota

Thomas Dela Cruz

Li-Anne Dela Vega

Brian Do

In honor of McKinley High
School

Nicolette Domingo

In honor of Tony Sefo and

Tony Mareko

Lovelace Domingo

Nicole A. Figueroa

Jennifer Ganeku

Mark Huang

Warren Hudson

An Huynh

Jasmine Iokepa

In honor of Academy of Finance

Jamie Kawamura

Ashford Kekaula

Ginny Khoundara

Paris Kippen

Katrice Kubota-Teruya

In memory of Yoshio Kubota

Rg Lagunday

Nani Le

Amber Lee

Amy Lee

Chase Lee

Jennie Lee

Ronald Lee

In honor of class of '03

Terisa Lee

Karen Lei

Shao Lin

Oscar Loui

Zhi Hao Ma

In honor of class of '03

Ayaka Mitsunari

Zachary Morita

Raymond Ng

In honor of my parents

Johntin Nguyen

Veronique Nguyen

Richard-Alan Nicolas

Stephanie Oyama

David Pae

In honor of my mother and in
Memory of the proud class of
'03

Gloria Philip

In honor of Clayton Philip

Chong Quach

Maxwell Quinto

Madeline Sebastian

Krystal Sedino

Chase Shafer

Jenni Shishido

Jason Tang

Amber Tateno

Brandon-Steven Tatupu

In honor of McKinley High

Natsuko Teruya

Tina Tin

Christine Tsuchiya

Lisa Uehara

Clariss Velasco

Donna Wu

Sok Leng Wu

Ronald Yu

In honor of class of '03

Natasha Yuen

Retired Faculty

James Nakamoto

Patsy Suyat

Friends of MHS

Betty Abe in memory of Kazumi

Abe (Class of '37)

Donald Amano in memory of
Nettie K.(Yamaguchi) Amano
(Class of '50)

Castle & Cooke Homes Hawaii, Inc.

Rosario Caratozzolo to the MHS

Literary Magazine

Mitchell D'Olier

Paul Fetherland

Gannett Foundation, Inc.

Hawaiian Electric Industries

Charitable Foundation

Amy Hayashi Hirano

Mitch Imanaka

Alan Ing

Gordon Ito

Michael Matsumoto

Patti Lei Meerians in memory of

Mason Hironaka (Class of '42)

Donald Miyashiro

Charlotte Morikuni

James Nakamoto

Winona Stevens

Patsy Suyat

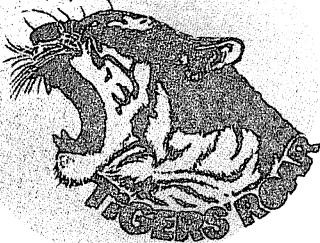
Victoria Ward, Limited

Do we have your correct information?Please help us update our data by sending us the correct
information. You can either call the Foundation at 536-3832
or write us at:

McKinley High School Foundation

1039 South King Street

Honolulu, Hawaii 96814

McKinley High School Foundation1039 South King Street
Honolulu, Hawaii 96814*Address Service Requested*Non-Profit
Organization
U.S. POSTAGE
PAID
Honolulu, Hawaii
Permit No. 9161